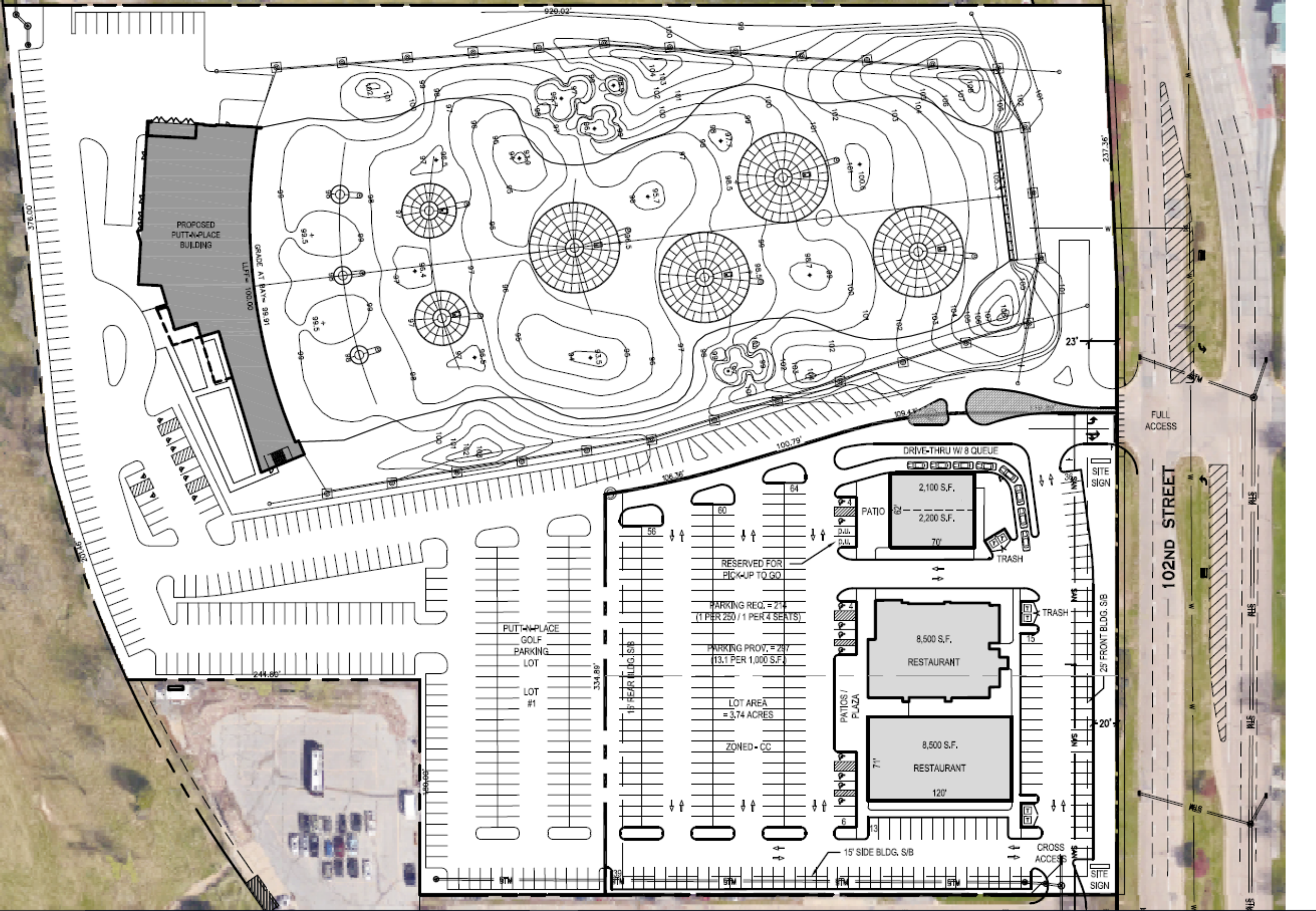


INTERSTATE 680



PROPOSED
PUTT-N-PLACE
BUILDING

16,860 S.F.
16,860 S.F. 16,860 S.F.

PUTT-N-PLACE
GOLF
PARKING
LOT
LOT
#1

RESERVED FOR
PICK-UP TO GO

PARKING REQ. = 214
(1 PER 250 / 1 PER 4 SEATS)

PARKING PROV. = 297
(13.1 PER 1,000 S.F.)

LOT AREA
= 3.74 ACRES

ZONED - CC

2,100 S.F.
2,200 S.F.
70'

8,500 S.F.
RESTAURANT

8,500 S.F.
RESTAURANT
120'

102ND STREET

FULL ACCESS

SITE SIGN

TRASH

TRASH

CROSS ACCESS

SITE SIGN

376.00'

200.45'

244.85'

334.88'

237.36'

23'

100.79'

126.75'

629.02'

20'

25' FRONT BLDG. S/B

15' SIDE BLDG. S/B

15' REAR BLDG. S/B

15'

15'

15'

15'

15'

15'

15'

15'

15'

15'